



Scan2PMS

Driver's License, Passport and ID Scanners

Businesses are looking for technology to expedite guest transactions, improve operational efficiencies, and protect assets from false chargeback claims and erroneous personal identification. TTI addresses these needs and more with Scan2PMS which instantly captures guest data from driver's licenses, passports and IDs.

Scan2PMS is a customized application that utilizes Optical Character Recognition (OCR) to capture relevant data from IDs and populate into appropriate fields. Scan2PMS can easily be integrated with third-party applications including most Property Management Systems.

TTI Technologies International
891 Amsterdam Avenue
Suite 105
New York, NY 10025

Toll Free: 888 692 4262
Direct: 646 218 2700
Sales: 212 897 0973
Fax: 212 663 1414
info@ttitel.com
www.ttitel.com

Increase Security

Scanner Technology

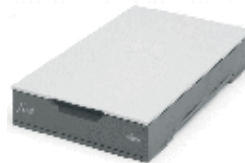
TTI offers a number of hardware options including driver's license, two-sided driver's license with barcode reading, and combination driver's license/passport scanners. The scanners are compact, portable, and easily incorporated into any front desk setting.

Streamline Front Desk Operations

- Instantly scan driver's licenses, passports and identification documents
- Reduce check-in time and enhance customer service
- Obtain accurate address information for security and future marketing efforts
- Eliminate need for photocopies reducing time and money
- Secure your property with captured guest images
- Capture images of business cards, travel cards (i.e. AAA©), etc.



SnapShell™ Camera



Fujitsu fi-60™



ScanShell 800™

Innovative Technology

- Download data instantly into most property management systems
- Preview and edit scanned IDs
- Save entire ID image or just the facial photo
- Customized fields for data capture
- Seamless remote installation
- Save multiple images per profile (PMS dependent)
- Driver's license authentication

World Class Service

TTI offers flexible support packages to meet the specific needs of your business.

- Software updates to accommodate driver's license, passport and ID modifications
- Remote web and phone support
- Advanced scanner exchange
- Remote monitoring by TTI's Support Center
- One year manufacturer's warranty (extended warranty upgrades available)

